



Clean Room Tumble dryer

T4900CR, T41200CR

Features and benefits

- Contamination control tumble dryer
- High productivity
- Constant airflow over time for a process always under control
- Electropolished drum
- Side access for lint chamber cleaning
- Easy access to HEPA filter housing for quick replacement (HEPA filter is not included from factory)
- Stainless steel drum, outer drum, front and sides
- Reversing drum
- Large door opening for easy loading and unloading
- Static prevention system
- Fully automatic pneumatic damper in the outlet to avoid contamination
- Compass Control
 - Selection of temperature and time for easy operation
 - Indication on HEPA filter lifetime
 - Batch number key in

Main options

- Drum speed control
- Stainless steel 316 drum and outer drum
- Connection to CMIS traceability system for process reporting



Images shown are a representation of the product only and variations may occur.

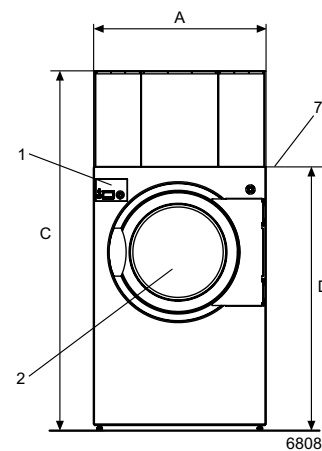
Main specifications			T4900CR		T41200CR	
Rated capacity,	filling factor 1:30	kg/lb	30/60		40/90	
	filling factor 1:20	kg/lb	45/100		60/135	
Drum volume		litre	900		1200	
Drum diameter		mm	1240		1240	
Heating alternatives	steam	kW	72		72	
	el	kW	60		72	
Consumption data*			Steam	EI	Steam	EI
Total time		min	18	16	23	20
Energy consumption		kWh	21.8	14.8	24.9	23.2
Evaporation		g/min	667	750	696	844
Energy kWh/litre water evaporated		kWh/l	1.87	1.23	1.55	1.38

* With filling factor 1:30, 100% polyester load at 42% initial moisture dried to 0%.

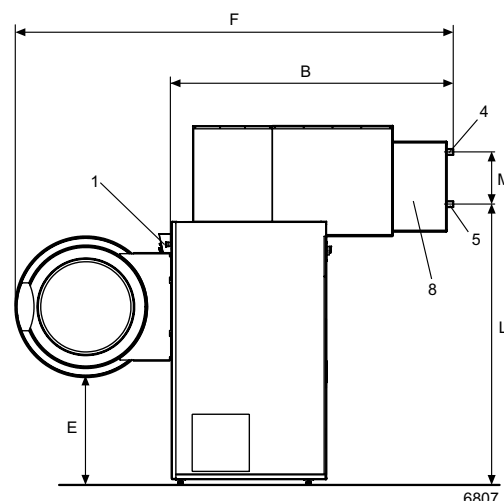


Electrical connections*			T4900CR	T41200CR
Heating Voltage				
EI	400-415V 3 AC 50 Hz	kW(A)	63 (100)	75 (125)
	400-480V 3 AC 60 Hz	kW(A)	63 (100)	75 (125)
Steam	200-240V 3 AC 50/60 Hz	kW(A)	3.7 (20)	3.7 (20)
	400-415V 3 AC 50 Hz	kW(A)	3.7 (16)	3.7 (16)
	400-480V 3 AC 60 Hz	kW(A)	3.7 (16)	3.7 (16)
Steam and air connections				
Steam	ISO 228/1-G1		1 1/4"	1 1/4"
Steam pressure		kPa	400-1000	400-1000
Steam consumption		kg/h		
Condensate	ISO 228/1-G1		1 1/4"	1 1/4"
Air outlet		ø mm	315	315
Evacuated air,	steam	m ³ /h	2300	2500
	electric	m ³ /h	2300	2500
Pressure drop		Max. Pa	400	400
Compressed air		ø	8	8
Air pressure		kPa	400-1000	400-1000
Sound levels				
Airborne sound level				
		dB(A)	<70	<70
Heat emission				
% of installed power, max			15	15
Shipping data				
Heating unit, steam/electric	net, kg		67/62	67/62
Filter unit	net, kg		172	172
Machine frame	net, kg		447	497
Heating unit, steam/electric	crated, kg		77/72	77/72
Filter unit	crated, kg		226	226
Machine frame	crated, kg		477	527
Shipping volume, Heating unit	m ³		0.61	0.61
Shipping volume, Filter unit	m ³		2.57	2.57
Machine frame	m ³		6.26	6.77
Dimensions in mm				
A Width			1290	1290
B Depth			2115	2305
C Height			2690	2690
D (with top removed)			1940	1940
E			805	805
F			3290	3480
G			220	220
H			230	230
I			1560	1560
K			85	85
L			2070	2070
M			390	390
N			800	800
O			2530	2530
P			369	369
R			620	620
S			40	40
1 Control panel 2 Door opening ø 940 3 Electrical connection 4 Steam connection 5 Condensate connection 6 Exhaust connection 7 Delivery height 8 Heating unit 9 Air intake				

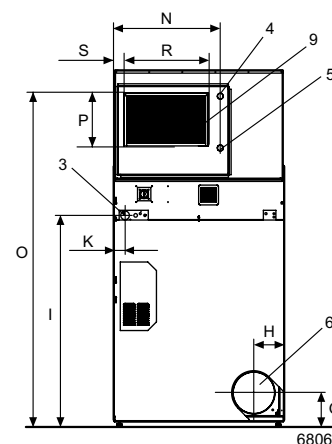
* Other voltages available, see installation manual.



Front



Right side



Rear side